

lumii

ENVIRONMENTAL MATERIAL DECLARATION



Our Environmental Material Declaration sticks to global standards, making sure we're clear and accurate about how our products impact the environment. It's accepted worldwide for its reliability and openness.

Contents

Product Information	3-4
Environmental Standards	5-6
Physical Properties	7-8
Safety and Hazards	9-10
Storage and Handling	11-12
Contact Details	13



PRODUCT INFORMATION

Product Overview

All Lumii Design Company Ltd Miixfelt™ products are made from 100% PET polyester fibres with no chemical binders. Available in a range of lighting, wall coverings, panels, screens, and ceiling systems. Lumii Design Company Ltd Miixfelt™ is lightweight, easy to install and suitable for new buildings and retrofits.

Manufacturer

Lumii Design Company Ltd
The Malthouse
Daveys Lane
Lewes, BN7 2BF
Phone +44 1732 750 240
Website: www.lumii.design

Sheet Specification

(Wall, lights and ceiling) treatment shall be Miixfelt™ from thermally bonded high density polyester containing not less than 50% recycled material, manufactured by Lumii Design Company Ltd. Acoustic test results from Salford University, UK 2023.

9mm panels

2400mm (+/- 3mm) x 1220mm (+/- 3mm) x 9mm depth, colour (L), sound absorption α_w 0.25 (0mm air gap) Class E. 0.65 (50mm air gap) Class C.

0.90 (100mm air gap) Class A. 0.90 (200mm air gap) Class A, NRC: 0.35 (0mm air gap) 0.75 (50mm air gap). Fire retardant: EN 13501-1: 2018 Classification B-s1, dOP.

12mm panels

12mm Panels-2800mm (+/- 3mm)x 1200mm (+/- 3mm) x 12mm depth, colour (L), sound absorption α_w 0.25 (0mm air gap) Class E. 0.65 (50mm air gap) Class C.

0.90 (100mm air gap) Class A. 0.95 (200mm air gap) Class A, NRC: 0.45 (0mm air gap) 0.85 (50mm air gap). Fire retardant: EN 13501-1: 2018 Classification B-s1, dOP.

24mm panels

2800mm (+/- 3mm)x 1200mm (+/- 3mm)x 24mm depth, colour (L), sound absorption α_w 0.50 (0mm air gap) Class C. 0.85 (50mm air gap) Class B.

1.00 (100mm air gap) Class A. 1.00 (200mm air gap) Class A, NRC: 0.65 (0mm air gap) 1.00 (50mm air gap). Fire retardant: EN 13501-1: 2018 Classification B-s1, dOP.

Install as per Lumii's Acoustic expert recommendations. If Miixfelt™ is to be specified for use other than as a wallcovering, ceiling baffle/island, acoustic lighting, please seek guidance from your installation professional or account manager.



ENVIROMENTAL STANDARDS

Eco-Friendly Acoustics

Lumii Design Company Ltd Miixfelt™ acoustic products are crafted from 100% polyester fibre and incorporate a minimum of 50% post-consumer recycled content, derived from PET plastic bottles. This material has attained Responsible Source certification, and is suitable for use in Living Building Challenge projects. It's noteworthy that Lumii Miixfelt™ material declarations are currently undergoing independent verification through a UKAS accredited auditing process for ISO 9001 & ISO 14001 certified Environmental Management Systems and have a letter of commitment which can be provided upon request. For further details, please reach out to admin@lumii.design or visit our website.



Company Environmental Standards

We are fully committed to eliminating or substantially reducing the utilisation of harmful substances and toxic materials.

We are dedicated to the responsible utilisation of resources, which includes careful consideration of biodiversity conservation and other aspects connected to the procurement of raw materials.

Our objective is to reduce our total energy consumption while concurrently maximising energy efficiency and investigating the possibilities of renewable and other eco-friendly "green power" solutions.

We source materials, products, and services from suppliers who possess independently certified environmental management systems or equivalent qualifications.

We provide informative and educational materials to designers, specifiers, architects, and customers, offering insights into the environmental qualities of Lumii Design Company Ltd, Miixfelt™ products and services.

We have ongoing research and development initiatives in place to ensure that Lumii's products and services consistently lead in environmental innovation, incorporating the latest environmental concepts, tools, and performance standards.

Material certifications are in accordance with our material supplier (third party verified).



Disposal Considerations

Lumii design company ltd are working towards all waste to be recycled again, made into new products or used within the existing range, at end of life. Products with multiple components can be readily taken apart, and uncontaminated individual components can be either reused or recycled, without posing hazardous waste concerns. They should be disposed of in accordance with current laws and regulations, preferably through a recognized collector or contractor.

Sustainable Material

- Carbon neutral product
- Zero carbon manufacturing
- 50% recycled material
- Low VOC and CDPH compliant - <0.092 mg/m³ (7 days)
- 0% waste manufacturing initiative
- Sustainable supply chain and anti-modern slavery



PHYSICAL PROPERTIES

Colour fastness

Miixfelt™ light fastness is dependent on use and exposure. It is typically suitable for indoor use only. Can be treated with a 3M textile waterproofer, then it will be suitable for exterior use.

Microbial Resistance

Growth rating: 0 (No growth)
Miixfelt™ does not promote the growth of moulds and mildew. Miixfelt™ incredibly durable and water-resistant, making it perfect for humid climates.

Physical & Chemical Properties

Odour:	No odour
pH:	7.8 (pH7 being neutral)
Boiling Point:	N/A
Melting Point:	250°C (482°F) Max.
Recommended Service Temp:	80°C (176°F)
Vapour Pressure:	N/A Specific
Gravity:	Polyester 1.38
Flash Point:	N/A
Explosive Limits:	N/A
Solubility in Water:	Not soluble Moisture
Absorption:	Less than 0.4% by weight
Relative Vapour Density:	N/A
Percent Volatiles:	Non-corrosive
Chemical Entity:	Polyester fibre from PET (Polyethylene Terephthalate)

Body Impact

Hard body impact

Miixfelt™ remains undamaged with no surface penetration when exposed to hard body impacts. When applied to 10 mm plasterboard, the system can withstand a 9 joule impact, equivalent to the impact of a 0.5 kg object dropped from a height of 2 metres. In some cases, a minor indentation may be noticeable when subjected to an impact equivalent to that of a 0.5 kg object dropped from a height of 0.5 metres.

Soft body impact

Miixfelt™ exhibits no surface damage or penetration when exposed to soft body impacts. When it is affixed to 10 mm plasterboard, the system is capable of withstanding a 70 joule impact, which is comparable to the force generated by a 50 kg object dropped from a height of 150 mm.



SAFETY & HAZARDS

Fire Hazards

In the event of a fire, the material will move away from the flame and may drip. The combustion products produced include carbon oxides (CO, CO₂) and hydrocarbons. For the safety of firefighters and others exposed to these combustion products, it is recommended to wear respiratory protective equipment. Extinguishing media that can be used include water spray or fog, foam, dry chemical, and carbon dioxide.

Chemical Stability

Lumii Design's Miixfelt™ acoustic products generally remain chemically stable in regular use and storage. However, it's recommended to steer clear of strong acids, strong bases, or oxidizing agents to maintain their integrity.

Volatile Organic Compounds (Voc) Emissions

Lumii Design Company Ltd Miixfelt™ acoustics products are categorised as low emitting products. Testing of Miixfelt™ polyester for VOC (Volatile Organic Compound) and formaldehyde emissions, conducted in accordance with CDPH Standard Method v1.2-2017, yielded the following results:

After 14 days in an office room scenario, VOC emissions were measured at 0.092 mg/m³.

Formaldehyde emissions were found to be less than 0.002 mg/m³. These test results indicate that both VOC and formaldehyde emissions from Miixfelt™ meet the threshold limits specified by applicable green building standards and regulations.

Health Effects/ Personal Protection

Handling and using Miixfelt™ acoustic products do not pose any known health hazards. No protective clothing is required during their handling or installation, as any free fibres present are not of a respirable size.

However, when cutting Miixfelt™ acoustic products, it's advisable to exercise caution and use personal protective equipment such as cut-resistant gloves and safety glasses. Always follow the manufacturer's usage and safety instructions, along with site-specific and individual safe working practices and requirements.

Under normal conditions of use, handling, and installation of Miixfelt™ acoustic products, no first aid measures are expected. In case of exposure to fumes resulting from the combustion of products, move to fresh air and seek medical attention if symptoms persist. If a significant portion of the product is accidentally ingested, do not induce vomiting and immediately seek medical attention.



STORAGE & HANDLING

Storage & Transport

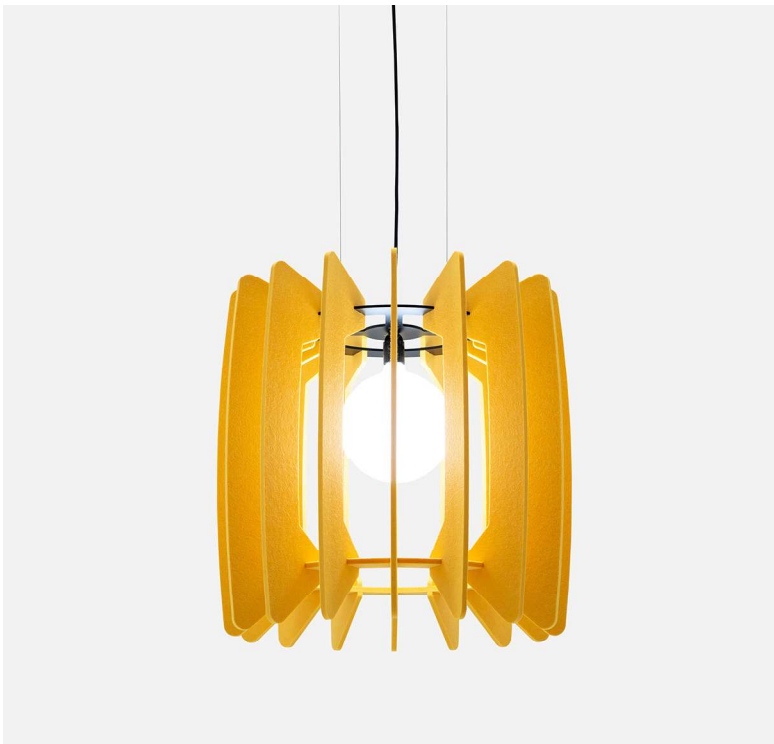
Follow the packaging recommendations provided by the manufacturer. Ensure that the product is stored on top, and keep it clean and dry. Avoid squashing or bending the product or its packaging. It's important to note that Miixfelt™ Acoustic products are not classified as dangerous goods.

Pattern Repeat

Non-woven. There is no pattern repeat in the product, but it does exhibit directional grain. Variations in the product's appearance from samples and between batches can occur due to the inherent characteristics of fibre blending and lay-up.

Fabric Care

To address spills on the fabric, promptly blot the affected area. Use a damp cloth for wiping, avoiding excessive rubbing or the use of excessive water, as it may impact the finish. When applying carpet or upholstery shampoo, follow the provided instructions. After each application of the cleaning solution, blot the area with a clean, dry cloth. For custom printed Miixfelt™, it is recommended to engage the services of a specialist cleaning company.





Contact Lumii

For any additional inquiries, comprehensive details about our products, or if you seek further clarification, please do not hesitate to reach out to us.

WEBSITE:	www.lumii.design
PHONE NUMBER:	01273 750 240
EMAIL:	hello@lumii.design
LINKEDIN:	@lumii-design-uk
INSTAGRAM:	@lumiidesignuk
PINTEREST:	@lumiidesigncompany
ADDRESS:	Lumii, The Malthouse, Daveys Lane, Lewes, East Sussex, BN7 2BF

Lumii Design Company Ltd is working towards 2024 UKAS accreditation to be an ISO certified organisation encompassing Quality (ISO 9001), Environmental (ISO 14001) and currently hold a letter of commitment. Brand names and logos are registered or unregistered trademarks owned or used under licence by Lumii Design Company Ltd. Copyright 2024 Lumii design Company Ltd. All rights reserved. It is the user's responsibility to determine if the product and information presented in this document is suitable for the intended application by engaging a suitably qualified consultant. The information contained in this document is correct to the best of our knowledge at the date of its publication. To verify that this document is the most current publication please check our website or contact your Lumii account manager admin@lumii.design.

